

# ASSEMBLY INSTRUCTIONS

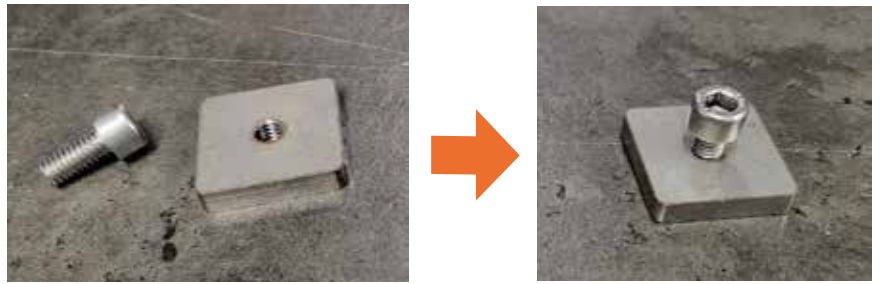
## Contents:



**1.** Mount the wide strip in the upper groove, the narrow one underneath.

Cut to length if necessary.

**2.** Insert the Allen screws into the brackets.



**3.** Slide one bracket into each end of the roof racks, in the lower track.



**4.** Slide the feet in the same way.  
The brackets are positioned inside.



**5.** Place the roof rack so the feet grip around the rails.

Tighten the bolt until the roof rack cannot slide sideways  
(approx. 8 Nm).



6. Tighten the screws in the brackets.



7. Lock the outer cover.

**NOTE!** The first 2-3 times, it might be **very** difficult to turn the key. Press firmly inward and turn to the right.



8. Slide in the end caps. The hinge should be closest to the front of the car.

The outer part opens to access the upper groove.

